



# Smoothing production planning

Luigi Manca, Consultant  
Dave Buxton, Simulation Expert

Fair Dynamics  
consulting

# the companies

- Fair Dynamics
  - Milan based Management Consultancy
- DSE Consulting
  - Leicester based Decision Support Consultancy
- Collaboration agreement since 2011





The dream...





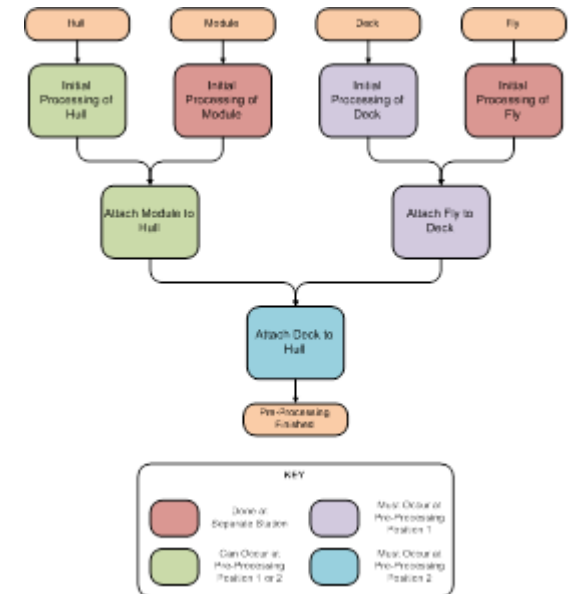


...and the  
nightmare



# Production uniqueness

- Complex process flow
- Logistic over 60 foot
- Limitation in space (both for yachts and people)
- Inflexible highly skilled workforce
- High quality & 'hand made' finish, but delivered cost effectively
- Huge quantity of man hours of work - circa 6000hrs
- Different *specialist* trades

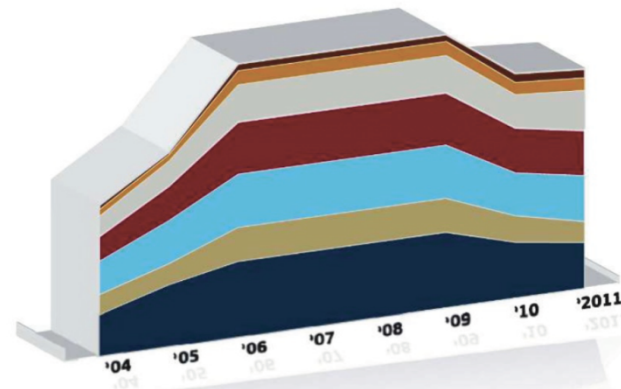
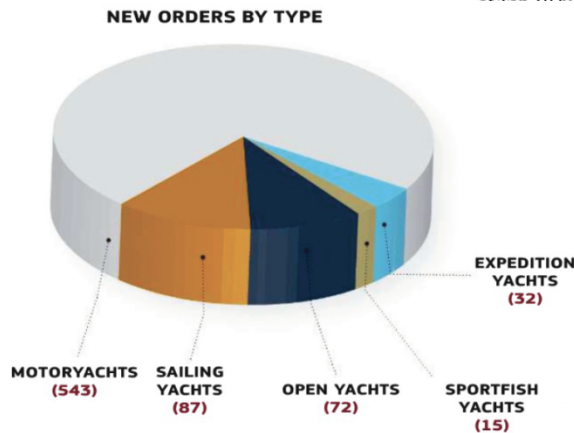




# The case: the market



- Italy is the top nation in yacht industry of luxury yachts and super yachts.
- Market downturn from 2008
- Mature and competitive market



\* (data super yacht intelligence 2011)

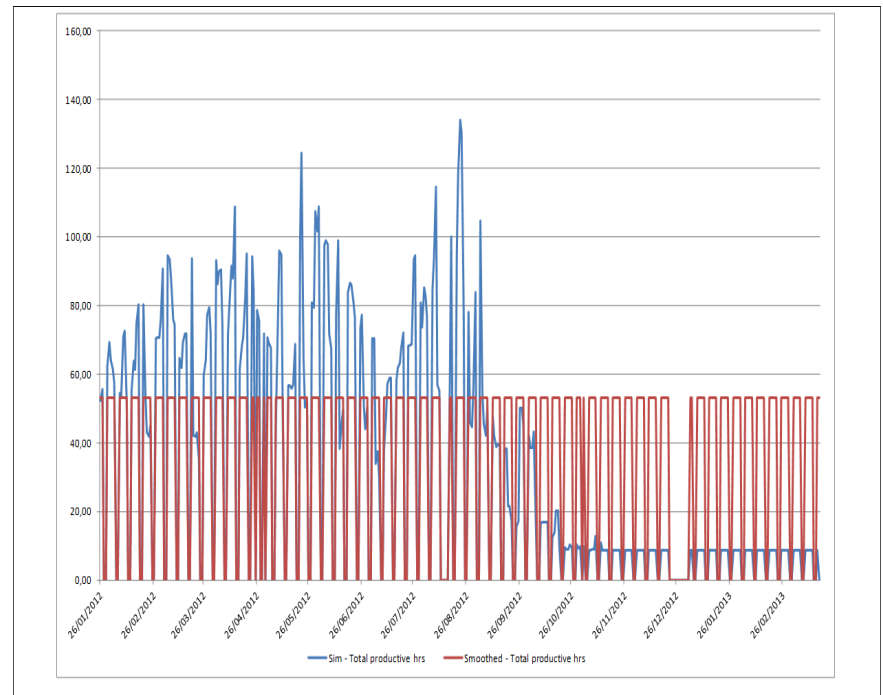
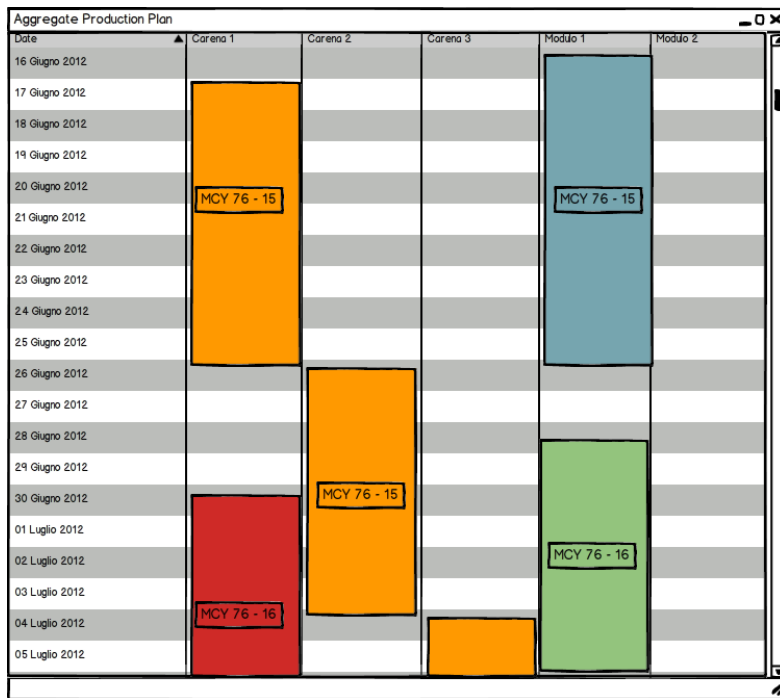
# The case: the customer

- New Entrant to the market
  - With New designs
    - Immediate winner of international prizes
  - New manufacturing ideas
    - lean manufacturing influenced
    - And a new production site
  - And an attractive price
- Equals **immediate success :-)**
- But...with a complex manufacturing process and a company still '*learning*' how could production keep pace with sales without compromising quality? :-(
  - 1 model currently, with aggressive growth strategy needing a *fast* production ramp up period
- The management felt that the solution lay in production scheduling, but current tools were not fit for purchase
- **The company needed a new approach to the production scheduling problem**

# The case: the requirements

The managers needed a new intelligent approach that would make the planning process simpler.

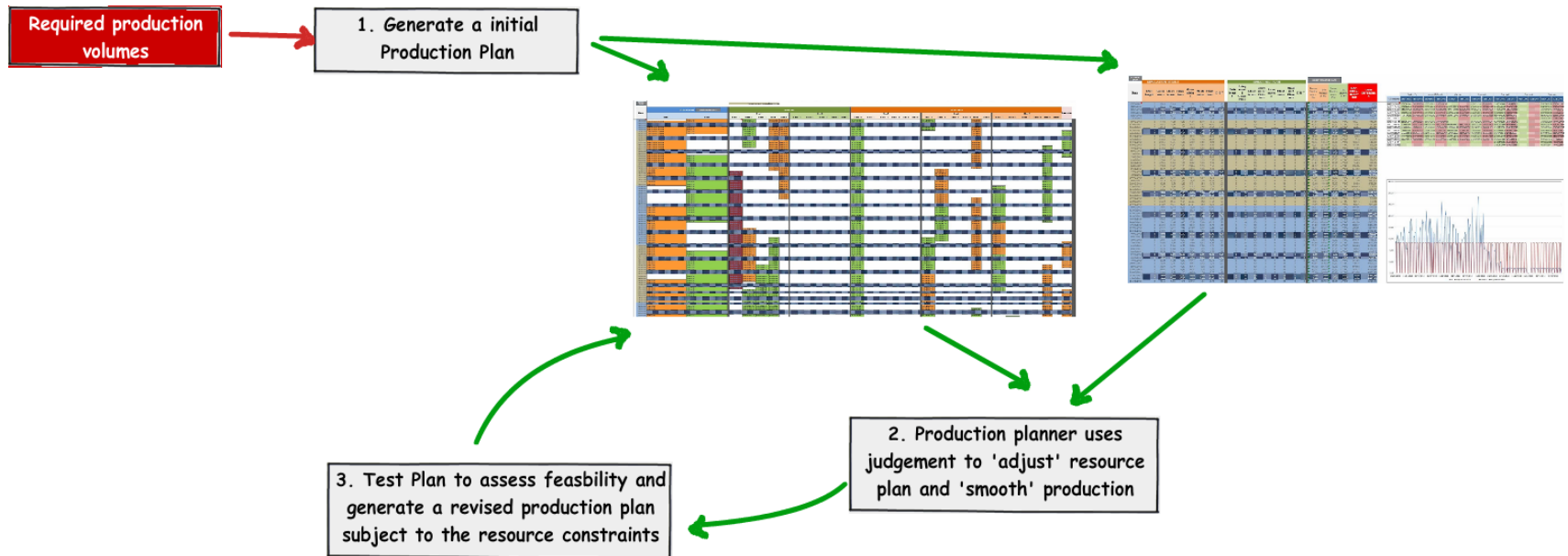
- How to balance the delivery dates required by final customers with the need of workforce over the production season
- Aggregate production plan to be used for scenario's analysis





# the Solution

- A test & learn decision support system power by AnyLogic simulation

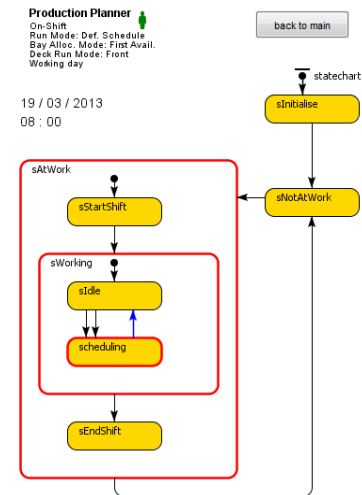


*Mixed modelling methodology using  
discrete Event & Agent-Based  
approaches*

# the innovative features (1)

- Agent Based approach for the production planner

- complex rules in daily scheduling tasks
  - What is the best daily schedule to meet delivery dates?
  - What should *bob* do next?
  - I'm getting behind - what should I prioritise to minimise the impact

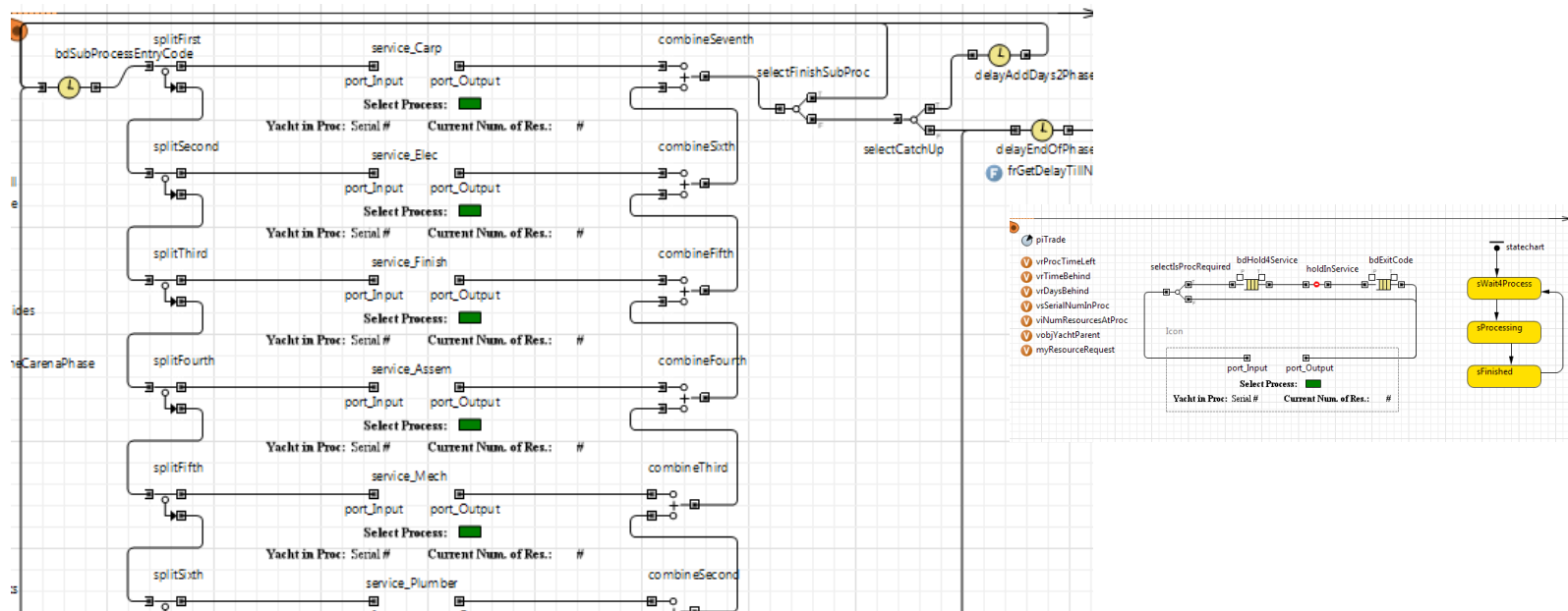


- Built by working very closely SMEs & the *real* production planner

- to ensure we understood how day to day decisions were being made
- that we had a good 1-to-1 fit between reality and the simulation

# the innovative features (2)

- a new enterprise library object
  - dealing with concurrent process
    - on the same yacht
    - but which might take different times
    - and use shared resources
    - but of different types
    - that might also be needed elsewhere



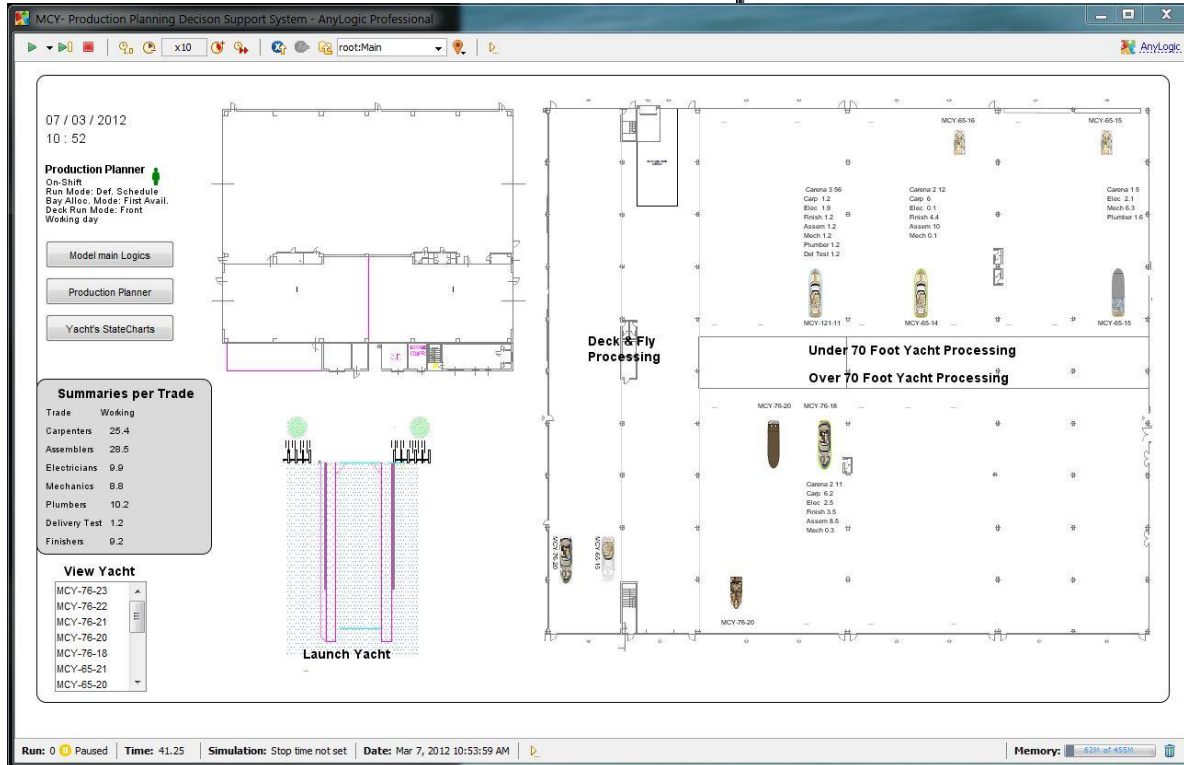
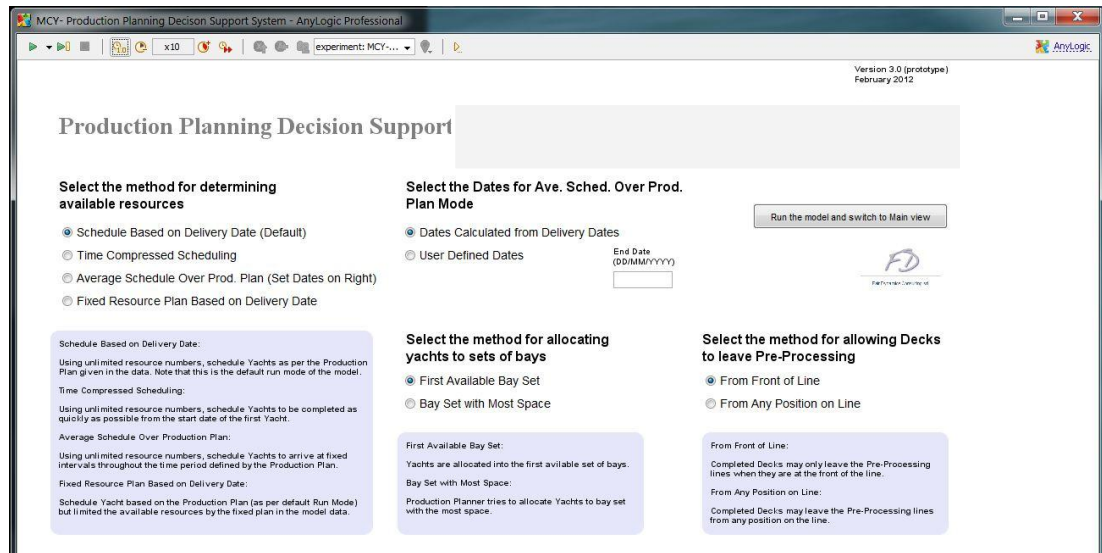
# the innovative features (3)

- Test & Learn

REFRESH DATA			SIMULATION RESULT								SMOOTHED PLAN							
Date	Working day	Shift length	Shift length	Carpenters	Electricians	Finishers	Assemblers	Mechanics	Plumbers	D & T	Shift length	Falegnami / Carpenters	Electricians	Carrozieri / Finishers	Assemblers	Mechanics	Idraulici / Plumbers	D & T
26/01/2012	TRUE	9	9	15.49	9.49	1.23	12.64	6.49	5.67	1.23	9	16	10	3	6	10	5	3
27/01/2012	TRUE	9	9	15.49	14.49	1.31	9.16	7.86	6.04	1.23	9	16	10	3	6	10	5	3
28/01/2012	FALSE	9	9	0.00	0.00	0.00	0.00	0.00	0.00	0.00	9	16	10	3	6	10	5	3
29/01/2012	FALSE	9	9	0.00	0.00	0.00	0.00	0.00	0.00	0.00	9	16	10	3	6	10	5	3
30/01/2012	TRUE	9	9	15.93	15.74	1.31	14.39	7.86	6.04	1.23	9	16	10	3	6	10	5	3
31/01/2012	TRUE	9	9	16.82	18.21	1.31	16.98	6.75	7.97	1.23	9	16	10	3	6	10	5	3
01/02/2012	TRUE	9	9	16.82	13.21	1.23	16.98	5.38	7.60	2.90	9	16	10	3	6	10	5	3
02/02/2012	TRUE	9	9	16.82	13.21	1.23	16.98	4.57	6.60	1.90	9	16	10	3	6	10	5	3
03/02/2012	TRUE	9	9	19.25	11.96	1.23	11.45	4.57	6.60	2.40	9	16	10	3	6	10	5	3
04/02/2012	FALSE	9	9	0.00	0.00	0.00	0.00	0.00	0.00	0.00	9	16	10	3	6	10	5	3
05/02/2012	FALSE	9	9	0.00	0.00	0.00	0.00	0.00	0.00	0.00	9	16	10	3	6	10	5	3
06/02/2012	TRUE	9	9	20.84	11.96	1.23	12.70	1.23	4.06	2.40	9	16	10	3	6	10	5	3
07/02/2012	TRUE	9	9	20.84	11.96	1.23	12.90	1.23	4.06	1.35	9	16	10	3	6	10	5	3
08/02/2012	TRUE	9	9	20.84	16.16	1.23	12.90	3.18	15.17	1.35	9	16	10	3	6	10	5	3
09/02/2012	TRUE	9	9	24.62	16.16	1.23	10.74	3.18	15.17	1.57	9	16	10	3	6	10	5	3
10/02/2012	TRUE	9	9	24.62	8.94	1.23	9.49	1.23	4.06	1.57	9	16	10	3	6	10	5	3
11/02/2012	FALSE	9	9	0.00	0.00	0.00	0.00	0.00	0.00	0.00	9	16	10	3	6	10	5	3
12/02/2012	FALSE	9	9	0.00	0.00	0.00	0.00	0.00	0.00	0.00	9	16	10	3	6	10	5	3
13/02/2012	TRUE	9	9	24.62	8.94	1.23	10.10	1.23	4.06	5.23	9	16	10	3	6	10	5	3
14/02/2012	TRUE	9	9	27.00	9.38	1.23	15.82	1.23	5.56	3.46	9	16	10	3	6	10	5	3
15/02/2012	FALSE	9	9								MCY-76-18	MCY-76-20						
16/02/2012	FALSE	9	9								MCY-76-18	MCY-76-20						
17/02/2012	TRUE	9	9								MCY-76-18	MCY-76-20						
18/02/2012	TRUE	9	9								MCY-76-18	MCY-76-20						



# the demo...



# concluding remarks

- A happy *learning* customer
  - Easier planning during the budgeting process
  - Operational improvement - an improvement in resource utilisation
- The project also provided a basis for the follow on project -
  - Extend the planning tool to other aspects of the supply chain
    - furniture manufacture
    - fiberglass shop
- Commercially - A innovative planning tool with broad applications
- Evidence that the use of agents does deliver robust solutions for complex system modelling - beyond the limits of DF

# Questions

Thank you for your time...

Luigi and Dave

Further information available from

- [www.fairdynamics.com](http://www.fairdynamics.com)
- [www.dseconsulting.co.uk](http://www.dseconsulting.co.uk)

Or grab us for a coffee or glass of champagne later ;-)